



# Practical Obstetrics 5<sup>th</sup> stage



## Fetal anomalies

Dr. Yaseen M.



# Causes (teratogenic agents )

A teratogen may be a drug, hormone, chemical, gamma irradiation, trace element, variations of temperature, or an infectious agent (particularly viruses)



**Cleft palate**

A **cleft palate** is an opening between the mouth (oral cavity) and the nose (nasal cavity) that occurs when the tissues separating these two cavities do not grow together properly.

This birth defect can occur in the lip (“primary cleft palate”, “cleft lip”, or “harelip”) or along the roof of the mouth (“secondary cleft palate”). Within the mouth, the cleft can extend along the bony portion (hard palate).

# Polycephaly(Double head)



# Hydrocephalus



**Hydrocephalus**, an increase in volume of the CSF,  
Clinical signs can vary from mild to severe and include, lethargy, or other forebrain abnormalities. There may be extensive expansion of the lateral ventricles in the frontal lobes.

# Hydrocephalus







***Schistosoma reflexus***

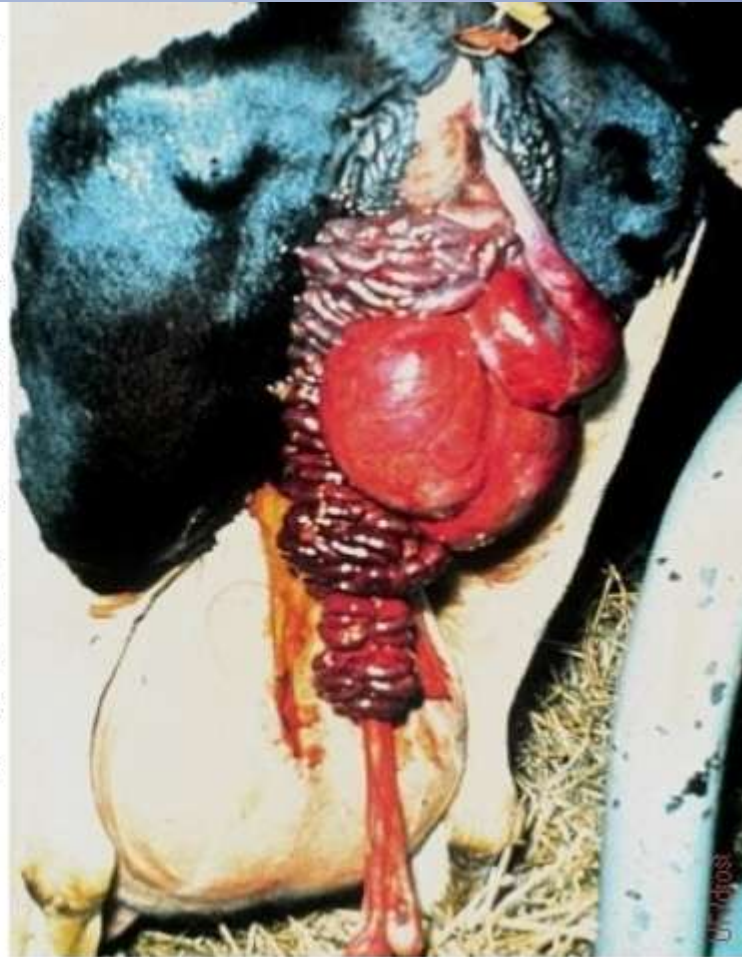
**Schistosomus reflexus (SR)** is a rare and fatal congenital disorder. Primarily observed in **ruminants**, its defining features include spinal inversion, exposure of the abdominal viscera because of a fissure of the ventral abdominal wall, limb ankylosis, positioning of the limbs adjacent to the skull, lung and diaphragm hypoplasia.



Partial Delivery -  
Schistosoma Reflexum.

Cow in the process of delivering a calf with Schistosoma reflexum. The extra-abdominal viscera of the fetal monster protrude from the vulva. The gauge of the fetal intestines readily distinguish them from potential maternal viscera. The ankylosed vertebral column frequently makes a vaginal delivery, without the benefit of a partial fetotomy, difficult.

Roberts SJ (1973)



# Accessory limbs.



The supernumerary limb will have either a left or a right sided anatomy and may develop as a forelimb (**cephalomelia**, thoracomelia) or as a hindlimb (usually as pygomelia).



**Chondroplasia in a calf.**



**Dwarfism( chondrodysplasia)**: is an inherited defect reported in many breeds of cattle. The severity of presentation is highly variable, but in general calves are born with a shortened stature, and deformity of the head, spine, and limbs.

## ***Perosomus elumbis***

congenital defect characterized by absence of the **caudal parts of the spine and spinal cord**, i.e. lumbar, sacral and coccygeal spinal segments with associated musculo-skeletal malformations of the hind quarters





# Perosomus elumbis





Every day, the Arabian horse reminds us...

*Life is Beautiful*

